

EmanuScript

VOLUME 50, ISSUE 7 | JANUARY 2011

A LETTER FROM THE RABBI:

Carrying on the Spirit



Do you remember last year's Shabbat in the spirit of Martin Luther King, Jr. and Abraham Joshua Heschel? Our sanctuary was packed with excited people clapping, swaying, and singing with joy.

That night, I wrote, "With Rick Recht, the Men of Galilee, and especially our own members, we were as welcoming, innovative, and relevant as any congregation in the country...We had something transcendent and holy, universally human but unmistakably Jewish, prayer for action and action that was prayer."

Quite a few people teased me afterward, asking, "So, what are you doing next week?" Rick Recht e-mailed, "Hey, Justin - I'm

still buzzin' from last Friday night. What a total blast! I hope you had as much fun as I did. It was SO cool to be back at Emanuel and to experience such rockin' energy." People were still feeling the magic three months later at our annual meeting, pointing to our King-Heschel Shabbat as a prime example of our Temple's rejuvenation.

So what's planned for this year? We're going to do it again, of course! Please mark your calendars for 7 p.m. the Saturday night before the federal holiday celebrating the birthday of Rev. Dr. Martin Luther King, Jr. — January 15 — and RSVP by calling the Temple office. Notice that this year the celebration will be a *havdalah* service of separation between Shabbat and the rest of the week. It will be Saturday, with fewer required prayers than a Shabbat service.

Last year, the Men of Galilee and our participants from Galilee Baptist Church were so important. This year, we expect even more guests, including Fr. Jeff

Vomund and the choir of St. Elizabeth Mother of John Baptist Catholic Church in North St. Louis City. Watch the weekly e-blast between now and then for more news.

Why is the birthday of Rev. Martin Luther King, Jr. so important? What does it have to do with Temple Emanuel? First, there was such a close friendship, spiritual connection, and social action alliance between Rev. King and Rabbi Abraham Joshua Heschel. Heschel was a powerful spiritual and social leader in his own right. It is ironic that Heschel is as well known among Christian thinkers and religious activists as among Jewish ones because he was one of the few influential Jewish leaders to live, work, and teach in Conservative, Chasidic, and Reform Judaism.

Heschel marched from Selma to Montgomery with King to draw attention to segregation and to call for civil rights. We can keep the memory of this

(Continued on page 9)

TEMPLE STAFF

JUSTIN KERBER
Rabbi
rabbijustin@testl.org
(314) 432-5877 EXT. 2

JOSEPH R. ROSENBLOOM
Rabbi Emeritus/
Senior Scholar
rabbijoe@testl.org
(314) 432-5877 EXT. 3

GAIL ARMSTRONG
Executive Director
gail@testl.org
(314) 432-5877 EXT. 101

LIZ SINGER
Religious School Director
(314) 432-5877 EXT. 5

ANNE MARIE APOLLO-NOEL
Office Administrator
office@testl.org
(314) 432-5877 EXT. 4

OFFICE HOURS

Monday
Closed

Tuesday-Friday
10 AM—4 PM

(In the event of an emergency, please call (314) 432-5877 and listen to the Rabbi's message.)

A Note From Our Office

Thanks to those of you who RSVP to our Temple events by the deadline dates — we are deeply appreciative. However, as a reminder, last minute RSVPs, while helpful, can complicate our events involving refreshments.

Our goal is always to provide enough food and drink for everyone at our special programs. Please help us continue to meet this goal by RSVPing *before or on the deadline indicated* for an event. Thank you for your cooperation in ensuring the ongoing success of special events at Temple Emanuel.

On days when the weather is threatening and either services or religious school are scheduled, congregants can always go to the website (www.testl.org) to find out if the temple is closing. Just check out the blue left hand box titled "Temple Emanuel St. Louis on Facebook."

Please let us know if you have moved or changed your phone number or email address.

FROM THE PRESIDENT

Energy and Activity at TE

Dear Friend,

"We're going to need a bigger Social Hall," was the remark I repeatedly heard on a recent Sunday morning at Temple, when our third spectacular "CelebraTE Sunday" program was underway. At 9:30 a.m., navigating among the many congregants and guests was challenging, as Rabbi Kerber, Elisa Recht and Joel Miller attempted to tear those present away from the succulent breakfast buffet. The aroma of hot, fresh-baked cinnamon buns, egg soufflé, fresh fruit and great Starbucks coffee weighed heavily on the gathered crowd as the beautiful melodies of the call to worship gradually pulled us into the Sanctuary.

Once there, the infectious energy of Elisa Recht gained everyone's attention as she greeted the worshipers. The fifth and sixth grade class, led by Sam Wise and Lea Braff, and assisted by Katherine Nachbar and Sam Burack, were the featured act that morning. Catchy songs and our traditional prayers got everyone in sync as the fifth and sixth graders did a wonderful presentation on the prophets they had been studying: Joshua, Deborah, Elijah, Amos, Isaiah, Jeremiah and Jonah.

The students displayed the wonderful portraits they prepared of the prophets, each incorporating the symbol chosen for that prophet. Then, each student or pair of students delivered an insightful oral

"The wonderful buzz of activity that pervades these CelebraTE Sunday events is really something to witness. I urge you to come see what it is all about."

presentation on their respective prophet, highlighting the prophet's life, what the prophet was known for, and why they chose the particular symbol for that prophet. The children led a substantial portion of the service, including traditional prayers, and developed their oral presentation skills. Several class members also brought and played instruments in some of the musical sections of the service. The services were attended by parents and many grandparents of the class members, and demonstrated how the

CelebraTE Series provides opportunity for intergenerational worship, study and celebration.

When services ended, the students were divided into groups, each of which (under the supervision of a parent volunteer) engaged in an "Iron Chef"-style competition of latke cooking. Great fun was had by all, and the product of the many different latke recipes was sampled at the end. You can read more about the competition in TE Religious School Director Liz Singer's report on page 4.

The wonderful buzz of activity that pervades these CelebraTE Sunday events is really something to witness. I urge you to come see what it is all about (and enjoy the more elaborate breakfast served on CelebraTE Sundays) on February 6, when Jessica Clay and her first and second grade class will be featured.

David Sherman III

NEWS & EVENTS

The Art of Giving

Before there were 24-hour news channels and alerts texted to smart phones, people in Japan, eager for news of war, looked to artists to interpret what had happened on the battlefield. By 1988, the resulting woodblocks, which had once been sold on the streets like newspapers, had drawn the admiration of Temple Emanuel board member Charles Lowenhaupt and his wife Roz.

Over the following years, they would collect more than 1,300 prints and related works of art from the Meiji period (1886-1912) showing scenes from the Sino-Japanese War and Russo-Japanese War. This

fall, the Lowenhaupts donated their entire collection to the St. Louis Art Museum, where portions of the work will be on display later this year.

With the exception of finding pieces to donate that will fill in the very few gaps in the complete collection, the Lowenhaupts say they are done buying woodblocks – though it might prove to be a hard habit to break. By the end of their collecting days, art dealers from all over the world were calling with news of woodblocks from the Meiji period, Charles said. Often, they could track a piece's progress around the globe as it was acquired

by different dealers who each, in turn, offered it to the Lowenhaupts.

Long before their reputation as collectors preceded them, the couple started searching out woodblocks from their target time period that were in the very best of condition. That, said Charles, was a challenge. "The prints themselves were sold on the streets of Tokyo," he said. "A battle would be fought and the artist would stand in the telegraph office and listen to the news, then rush to studio." The woodblocks were sold within a few days at low prices, and few survived in good condition.

It proved to be a global

hunt, as the Lowenhaupts looked for woodblocks in each of their stops around the world. Now, the world has come to St. Louis, both in the form of the Lowenhaupts' gift to the museum and to Temple Emanuel, according to Charles, in the form of the recent Besa exhibit. There are parallels to be found between Besa and the Meiji period artwork, he said. He noted the woodblocks were created at a time when Japan was entering the world community that was new to it, whereas Besa has brought an appreciation of global connections to TE.

A Clear Sign of Friendship

By Gail Armstrong
TE Executive Director

Temple Emanuel cantor Rev. Malachi Owens, Jr. is a man of many talents. Familiar to many TE members because of his amazing voice and vibrant personality, Malachi's creativity extends well past his music. He has been working for several years, on and off, on a stained glass piece of art which he presented to Temple Emanuel at a recent Friday Shabbat Service.

Comprised of 100 different pieces of glass, the panel is highlighted by a deep amber

Star of David. Below, in dark blue glass, are the Hebrew letters representing "adonai echad" (the Lord is one). Blue, a symbolic color in the Jewish religion, is a reference to the commandment to put a thread of blue in the fringes of our clothing. It is also integrally related to the colors of the Israeli flag.

Rabbi Justin Kerber, moved by the gift of this beautiful piece of art, said "It goes to show that Malachi doesn't just work here, he knows us so well that he's a part of our family. In fact, he might know us even better than we know ourselves!"

Stained glass has a long history at Temple Emanuel. The sanctuary windows were created by the renowned English artist, Margaret Traherne, who also designed the windows for the rebuilt Chapel of Unity, Coventry Cathedral in England.

This new piece will be installed in a prominent place at the Temple, and is a welcome addition to its special art collection reflecting the history of the Jews, Judaism and Temple Emanuel.



"The Lord is One" as rendered in glass by Malachi Owens, Jr. The frame's inscription reads: "The Lord is One, by Rev. Malachi Owens, Jr., a gift to Temple Emanuel, November 12, 2010."

Photo by Gail Armstrong

From the Religious School

By **Liz Singer**

Religious School Director

The month of December has been busy, largely because we had only two weeks of school. The latke making party was a great success. The families tasted four different kinds of latkes in a latke cook off. We tried tasty potato, sweet potato, mixed vegetable, and cheese latkes. One very observant child asked, "With all of these different kinds, what makes a latke, a latke?" My hasty answer was "the oil." But I think a latke is also a latke because of the season.

We eat cake year round, but it is only birthday cake, or wedding cake, when celebrating a special occasion. So, we can eat a potato pancake anytime, but it is only a latke when we are surrounded by family and friends and candles.

I loved the question but I also love the thought. Jews often ask, "Why do we do this?" or "What makes this night different from all other nights?" We rehearse with our children the stories and the answers. A pervasive thought in Judaism is that we have symbols and stories to remind us that we are different and come from this rich history.

Our job, as "the people of the book" is to keep the children asking questions. In a couple of months during Passover, questions become a critical part of the Seder. Even as adults, we must not forget the importance of the question, which may be even more important than the answer.

Speaking of asking questions, the fifth and sixth grade class hosted a phenomenal CelebraTE service in December. The service focused on the

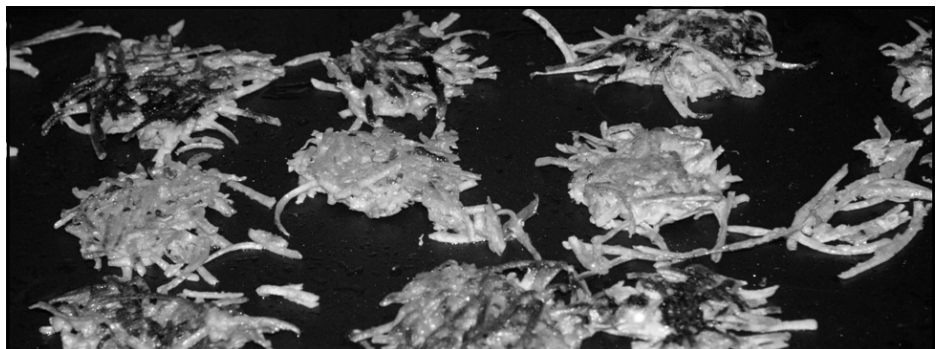
prophets they have been studying in class. Prophets is a subject that is often ignored until students decide to enroll in a Rabbinical seminary. I am really proud of the students for going beyond the usual subjects, and opening my mind with a lot of questions.

This month, after coming back from winter break, lots of questions will be asked, and probably a lot of information will have been forgotten. Some of the classes will be focusing on values, and learning what it means to be part of a community. This is especially timely with a New Year, new resolutions, and new beginnings.

Values in Judaism are not exclusive to an individual. We are taught to have respect for our environment as well. On January 20, we celebrate that all living things are important. We even recognize the new year of the trees and of the harvest. It is common to observe

this holiday, the holiday of *Tu B'Shevat*, as a day to bring attention to respecting the environment.

We ask a lot of questions this time of year. It is the season of giving: Why don't some people have what they need? We make New Year's resolutions: What can I change about myself? We get report cards: What does my child need to be more successful in school? These questions, and maybe latkes too, should be brought into the rest of the year. I hope that everyone has a month of great questions that lead to greater discovery.



Above: TE Religious School students pose with their latkes.

Bottom: A close-up look at the students' handiwork in the making.

Photos by Liz Singer

Temple Emanuel's 2nd Annual Celebration of

Song, Story and Social Action

*In honor of, and in the spirit of, Rev. Dr. Martin Luther King, Jr.
& Rabbi Abraham Joshua Heschel*



*Rev. King and Rabbi Heschel, ca. 1965
(Photograph reproduced with the generous
permission of Prof. Susannah Heschel)*

Saturday, January 15, 2011

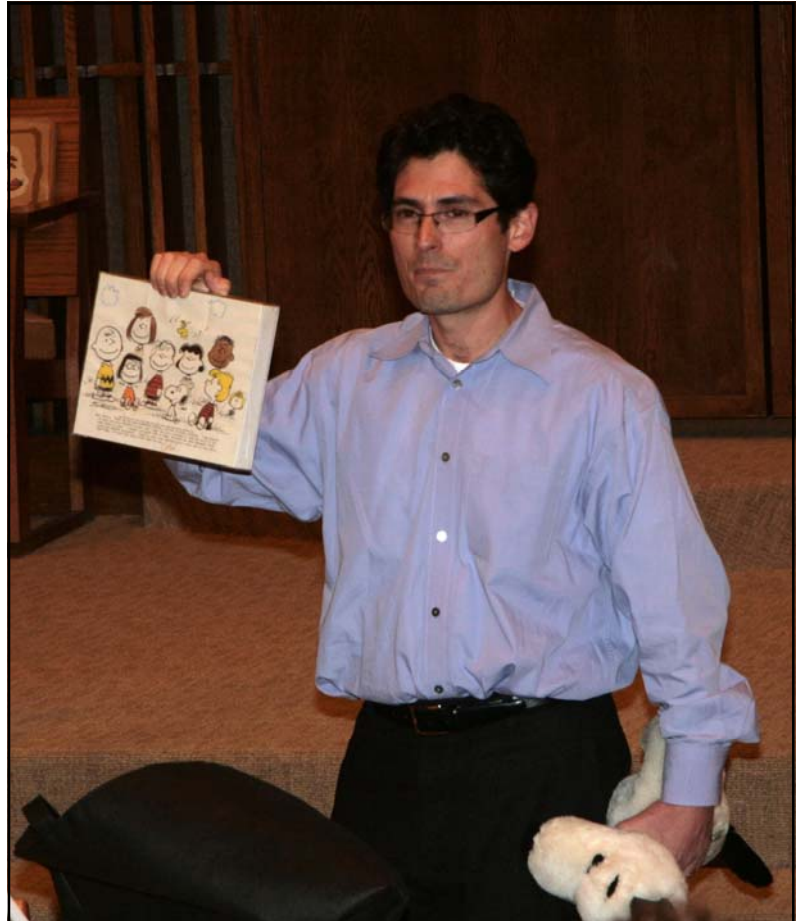
7 p.m.

Temple Emanuel

St. Louis, Missouri

RSVP by Jan. 10 to office@testl.org or (314) 432-5877

A Festival of Light



Above left: Members of the Kaiser family light the Shabbat candles. **Above:** Rabbi Justin Kerber shows the congregation his letter from “Peanuts” creator Charles Schultz, a response to his childhood inquiry of why there were no Chanukah cards available. **Bottom:** A true festival of light at Temple Emanuel. Temple members each brought *menorot* from their homes to light and display in the sanctuary.





Photos by Andy Wise

Above: Temple Emanuel members lighting their family *menorot*.
Center: Congregants enjoying the special Chanukah First Friday dinner and desserts. **Above left:** Eleanor Goldman. **Bottom left:** Issac Kurz.

A CALL TO ACTION

Social Action Update

DECEMBER RECAP:

Thank you for giving!

Temple Emanuel members donated more than \$3,000 in checks and gift cards to Adopt-A-Family in 2010. The generosity that comes from our small congregation warms the heart. Thank you so much to everyone who donated. Thank you also to Mary Schoolman and Maggie Beal who have organized this annual giving event for the past 18 years. All your efforts are greatly appreciated.

JANUARY EVENTS:

Food Donations Needed

Even though the season of giving has ended, hunger continues. Please remember to bring in donations for the Harvey Kornblum Food Pantry. There is always a bin in the religious school wing off of Room 1.

For the month of January, the food pantry is looking for these specific items in order to provide well-balanced nourishment for the community in need: peanut butter & jelly, canned fruit, canned pasta with meat, canned tuna, canned hearty soups, healthy snacks, and personal care items (shampoo, toothpaste, soap and baby diapers – all sizes).

For more information, contact Louise Levine at (636) 227-1259.

MLK Community Celebration

The 22nd Annual Martin Luther King Jr. Commemoration A Celebration In Song will be held at noon, Thursday, January 13 at the Jewish Community Center-Staenberg Family Complex-Arts & Education Building, 2 Millstone Campus Drive. For more information, please see the flyer posted in the Temple office. And please see pages 5 and 10 for details about Temple Emanuel's own celebration in the spirit of Martin Luther King, held at the Temple January 15.

Jewish Community Blood Drive

The St. Louis Jewish Community Blood Drive will be held from 10 a.m. to 4 p.m. Sunday, January 16 at Congregation Young Israel, 8101 Delmar Blvd. Please call 1-800-RED CROSS to make an appointment. Walk-ins are welcomed, but appointments take priority. Babysitting is available.

Please also bring a non-perishable item to donate. For more information, see the flyer posted in the Temple office.

COMING IN FEBRUARY

Jewish Social Action Network Volunteer Day

Save the date Sunday, February 13 for the Jewish Social Action Network Volunteer Day to Benefit the Foster and Adoptive Care Coalition.

Join with Saint Louis area congregations to help get the new teen and young adult resale shop, "ReFresh," up and running. Volunteers are needed to work in shifts sorting, processing, tagging, hanging and organizing the clothes in the shop, which opens officially in the spring of 2011. The event will take place from 10 a.m. to 4 p.m. at the shop, located on Brentwood Blvd. across from Whole Foods.

This will be the first time JSAN is putting together an inter-congregational Social Action event. Please consider volunteering to join the Temple Emanuel team. Contact Hallie Huber, hal_87@yahoo.com or (314) 394-0440 to take part in this event. We will form a team that will volunteer after the Temple Emanuel Religious School day has ended.

ReFresh is a project of the Foster and Adoptive Care Coalition. All proceeds from the new shop will benefit the work of the Coalition. The Foster and Adoptive Care Coalition is the area's largest recruiter of foster and adoptive homes for children in need. In addition to recruiting foster and adoptive homes, the Coalition also offers many support services to foster and adoptive parents, including support groups, training, advocacy and newsletters.

This project is coordinated by the Jewish Community Relations Council and sponsored by JSAN. For more information, contact Gail Wechsler at gwechsler@jrcrstl.org or (314) 442-3894.

Tributes and Transitions

GENERAL FUND

Lillian and Mort Bloch in memory of Silvia and Alan Mayer.

Gloria Goldblatt in memory of Samuel A. Goldblatt.

Susan and David Sherman III in memory of Hester Donziger.

A. Fuller Glaser, Jr. in honor of Rabbi Rosenbloom's birthday, the services of Rabbi Justin Kerber, the service of Susan and David Sherman III to Temple Emanuel and the services of the Temple's officers, board and religious school teachers.

RABBI KERBER

DISCRETIONARY FUND

Tova and Carl Zimmerman in memory of Jules Zimmerman, Ted Zimmerman and Ben Neuman.

Bruce Ellerin in honor of Rabbi Justin Kerber.

RABBI ROSENBLOOM

DISCRETIONARY FUND

Margie and Bert Talcoff in memory of Harry and Rose Glotzer and Irving and Bess Talcoff.

ENDOWMENT FUND

Maurine Burstein and Family in memory of Leo Marmor.

FLORAL FUND

Susan Sale in memory of Edith Rothschild.

Martha and Robert Scharff Jr. in memory of Carol Cooper.

SOCIAL ACTION FUND

Peggy and Bernhard Voss in honor of Barbara Lewington.

ANNIVERSARIES

Kenneth and Lois Marshall

Melvyn and Dorothy Lefkowitz

Louis Rothschild III and Anne Rothschild

Louis and Mary Sachs

Bijan and Jane Etezadi

Fredric and Beverly Simowitz

ANNOUNCEMENTS

Sympathy to family of David R. Levy, brother of Norma Singer.

Sympathy to the family of Harriet Abrams Karney, sister of Don Goldblum.

Congratulations to Frank and Natalie Kurz on the birth of their daughter, Rachel Melina Kurz.

"IN THE RISING OF THE SUN AND IN ITS GOING DOWN, WE REMEMBER THEM."

Union Prayer Book

If you would like to honor the memory of a loved one by participating in our worship service (kindling the Sabbath candles or blessing the Torah), sponsoring our bimah flowers or the Oneg Shabbat refreshments, or by making a memorial contribution to the Temple, please contact us.

Phone:

(314) 432-5877 or

Email: office@testl.org

(Continued from page 1)

inspiring partnership alive by retelling the story.

Secondly, two groups of students from Roosevelt High School in St. Louis City visited our BESA Exhibition and met with Zubaida Ibrahim, of the Islamic Foundation of Greater St. Louis, our outstanding Executive Director, Gail

Armstrong, and myself in December. You should have seen some of the looks on their young faces as they learned the story of Besa and saw the Torah up close. King and Heschel would have been proud – yet I can feel their spirits keenly urging me that so long as inner city public schools like Roosevelt are underprivileged, so long as Muslims in America face

intolerance, so long as racial inequality persists, their work is not yet finished. It is up to us – *aleinu* – to continue their struggle until America is the beacon of love, justice and righteousness they envisioned. Won't you be with us on Saturday night, January 15, 2011?

What's Happening at Temple Emanuel

"FIRST FRIDAY" & NEW MEMBERS DINNER FRIDAY, JANUARY 7

6:15 PM Dinner
7 PM Worship
Join us for our contemporary worship service and dinner, this month held in honor of Temple Emanuel's new members. Please RSVP to the Temple Office at (314) 432-5877 or office@testl.org.

MLK HAVDALAH SERVICE SATURDAY, JANUARY 15

7 PM
An evening of community collaboration, social action and multi-cultural celebration in honor of, and in the spirit of, Rev. Dr. Martin Luther King, Jr. and Rabbi Abraham Joshua Heschel. Featuring Rick Recht and his band, The Men of Galilee, and the St. Elizabeth's Choir. Please RSVP by Jan. 10 to office@testl.org or (314) 432-5877.

RELIGIOUS PHILOSOPHY MONDAY, JANUARY 17

10 AM
The Religious Philosophy Class led by Rabbi Rosenbloom will meet this month in the Temple Library. The group will continue reading *The God Delusion* by the biologist Richard Dawkins. It has been published in paperback and is available at your local bookstore or online. While Dawkins is an outstanding scientist, he is also a controversial polemicist for his causes. His book is a serious challenge to those who believe in the existence of God. He holds that those who believe in God are deluding themselves, as well as causing harm to themselves and others. We look forward to you joining us this month as we meet for stimulating discussion, conversation and enlightenment. Our discussions are

freewheeling and open-ended with no holds barred.

BOOK CLUB THURSDAY, JANUARY 20

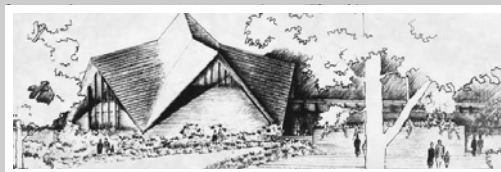
7:30 PM
January's rescheduled TE Book Club will discuss *Messages From My Father, A Memoir* by Calvin Trillin, an author and an essayist for *The New Yorker* magazine. Sufficient quantities of the book are available at the St. Louis County and St. Louis City Public Libraries.

The *Detroit Free-Press* says of the book: *Messages from My Father* first appeared in *The New Yorker*, where it reportedly drew more mail than anything else the prolific Trillin has written. No wonder. There are bits of Abe Trillin in everyone's father - everyone, at least, who has known a father's love, been molded by a father's dream, cracked up at a father's antics. It is a

measure of Trillin's skill as an essayist that this slim volume is both a detailed portrait of one particular dad and a meditation on American fatherhood that comes close to being universal."

SUPPER & STUDY FRIDAY, JANUARY 21

6:30 PM Supper
8 PM Worship
Please note: January's Supper and Study will take place a week earlier than normal. RSVP to Marilyn Levinson at (314) 993-3645 or email mylml6@gmail.com with the number of people and the dish you will bring.



Celebrating a new year and new friends ...

Temple Emanuel's First Friday Dinner in Honor of New Members

January 7, 2011

6 p.m. Dinner

7:15 p.m. Service

Please RSVP to the Temple Office at (314) 432-5877 or office@testl.org by Dec. 31, 2010

CALENDAR

JANUARY 2011

SUNDAY	MONDAY	TUESDAY	WEDNESDAY	THURSDAY	FRIDAY	SATURDAY
						1 No Torah Study
2 No Religious School	3	4	5	6	7 6 PM First Friday & New Member Dinner 7:15 PM Worship	8 9:30 AM Torah Study
9 9:30 AM Religious School Family Service	10	11	12	13	14 8 PM Shabbat Worship	15 9:30 AM Torah Study 7 PM MLK <i>Havdalah</i> Song, Story & Social Action
16 No Religious School	17 10 AM Religious Philosophy 7 PM Board Meeting	18	19	20 7:30 PM Book Club	21 6:30 PM Supper & Study 8 PM Shabbat Worship	22 9:30 AM Torah Study
23 9:30 AM Family Service	24	25	26	27	28 8 PM Shabbat Worship	29 No Torah Study
30 9:30 AM Family Service	31					

TEMPLE EMANUEL:

Shabbat Worship Schedule

FRIDAY, JANUARY 7
6 PM FIRST FRIDAY DINNER
7:15 PM WORSHIP
Shevat 2
Bo, Exod. 10:1-13:16

FRIDAY, JANUARY 21
6:30 PM SUPPER & STUDY
8 PM WORSHIP
Shevat 16
Yitro, Exod. 18:1-20:23

FRIDAY, JANUARY 14
8 PM WORSHIP
Shevat 9
B'shalach, Exod. 13:17-17:16

FRIDAY, JANUARY 28
8 PM WORSHIP
Shevat 23
Mishpatim, Exod. 21:1-24:18

January at-a-Glance

SATURDAY, JANUARY 15
7 PM
MLK *Havdalah*
Song, Story & Social Action

MONDAY, JANUARY 17
10 AM
Religious Philosophy

THURSDAY, JANUARY 20
7:30 PM
Book Club

REQUESTED
SERVICE
CHANGE

Non-Profit Org
US Postage
PAID
St. Louis, MO
Permit No. 686

12166 Conway Road
St. Louis, Missouri 63141

